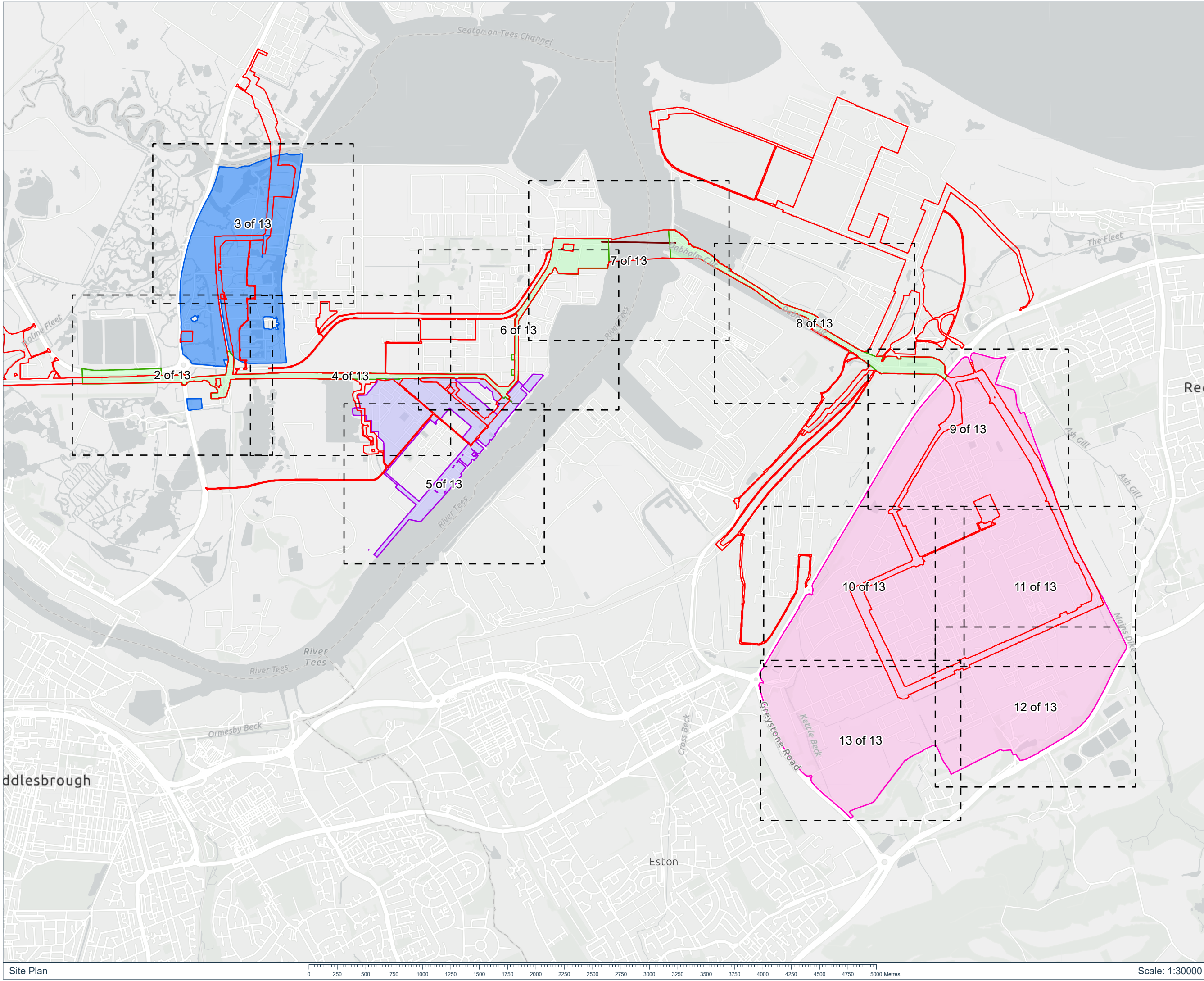


Drawing Location: C:\Users\andrew.lambe\Documents\22004379 - Geomatics\01 DM Plans\22004379\_PLN\_INFO\_547.1\22004379\_PLN\_INFO\_547.aprx



**Key:**

- Page Extent
- Order Limits
- Protected Crossing
- Brinefields
- North Tees Facilities
- Pipeline Corridor
- Wilton Complex

**Notes:**

Coordinate System: British National Grid  
Projection: Transverse Mercator  
Datum: OSGB 1936

**Interest:**  
SABIC UK Petrochemicals Limited

**Location:**  
Land surrounding the River Tees, Redcar  
and Cleveland, Tees Valley, TS6 6AF

**Coords:** 454358, 522660

**Scheme Name:**  
H2 Teesside

**Drawing Name:**  
Information Plan

**Drawing No:** 22004379\_PLN\_INFO\_547.1

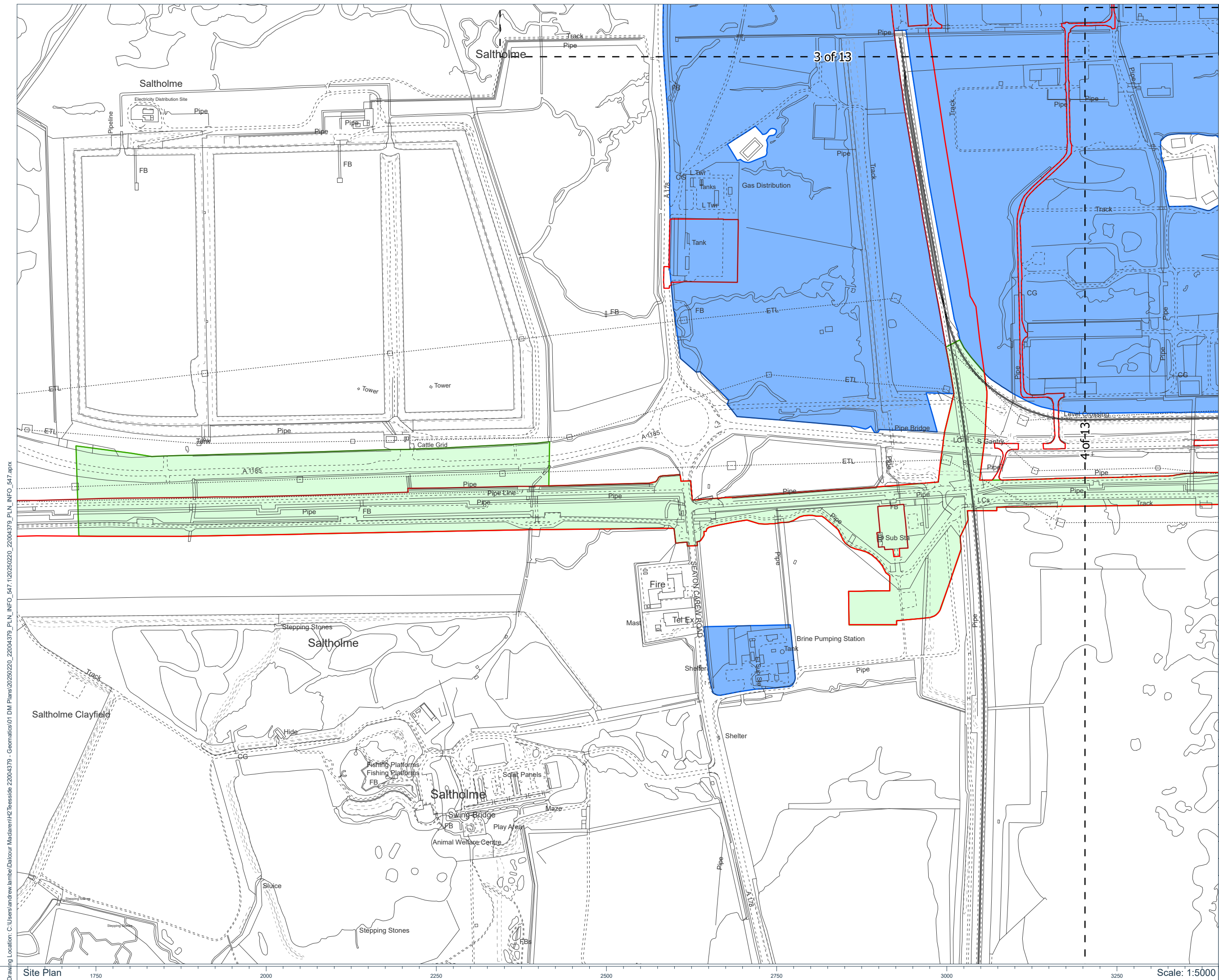
Rev	Date	Description
-	24.02.2025	First Issue

Drawn:	AL	
Approved:	JP	
Sheet No:	1 of 13	
Sheet Size:	A3	



The information contained in this document is confidential and protected by copyright. The use, copying or disclosure to a third party, either wholly or in part, except with the written permission of, and in the manner prescribed by BP Exploration Operating Company Limited constitutes an infringement of copyright. Dalcour Maclaren does not warrant that this document is definitive nor free of error and does not accept liability for any loss caused or arising from reliance upon information provided herein. Although our best efforts have been made to ensure the accuracy of these plans, all measurements must be confirmed on site. BASED UPON THE ORDNANCE SURVEY MAP WITH THE SANCTION OF THE CONTROLLER OF HM STATIONERY OFFICE. CROWN COPYRIGHT RESERVED. © OS LICENCE No. AC0000808122





**Key:**

Page Extent

#### Order Limits

Brinefields

 Pipeline Corridor

**Notes:**

Coordinate System: British National Grid  
Projection: Transverse Mercator  
Datum: OSGB 1936

**Interest:**  
SABIC UK Petrochemicals Limited

**Location:**  
Land surrounding the River Tees, Redcar  
and Cleveland, Tees Valley, TS6 6AF

Coords: 450556, 523602

Scheme Name:  
H2 Teesside

**Drawing Name:**  
Information Plan

Drawing No: 22004379\_PLN\_INFO\_547.2

Rev	Date	Description
-	24.02.2025	First Issue

<b>Drawn:</b>	AL
<b>Approved:</b>	JP
<b>Sheet No:</b>	2 of 13
<b>Sheet Size:</b>	A3



The information contained in this document is confidential and protected by copyright. The use, copying or disclosure to a third party, either wholly or in part, except with the written permission of, and in the manner prescribed by BP Exploration Operating Company Limited constitutes an infringement of copyright. Dalour MacLaren does not warrant that this document is definitive nor free of error and does not accept liability for any loss caused or arising from reliance upon information provided herein. Although our best efforts have been made to ensure the accuracy of these plans, all measurements must be confirmed on site. BASED UPON THE ORDINANCE SURVEY MAP WITH THE SANCTION OF THE CONTROLLER OF HM STATIONERY OFFICE. CROWN COPYRIGHT RESERVED. © OS LICENCE No. AC0000808122

Coordinate System: British National Grid  
Projection: Transverse Mercator  
Datum: OSGB 1936

**Interest:**  
SABIC UK Petrochemicals Limited

**Location:**  
Land surrounding the River Tees, Redcar  
and Cleveland, Tees Valley, TS6 6AF

**Coords:** 451266, 524935

**Scheme Name:**  
H2 Teesside

Drawing Name:  
Information Plan

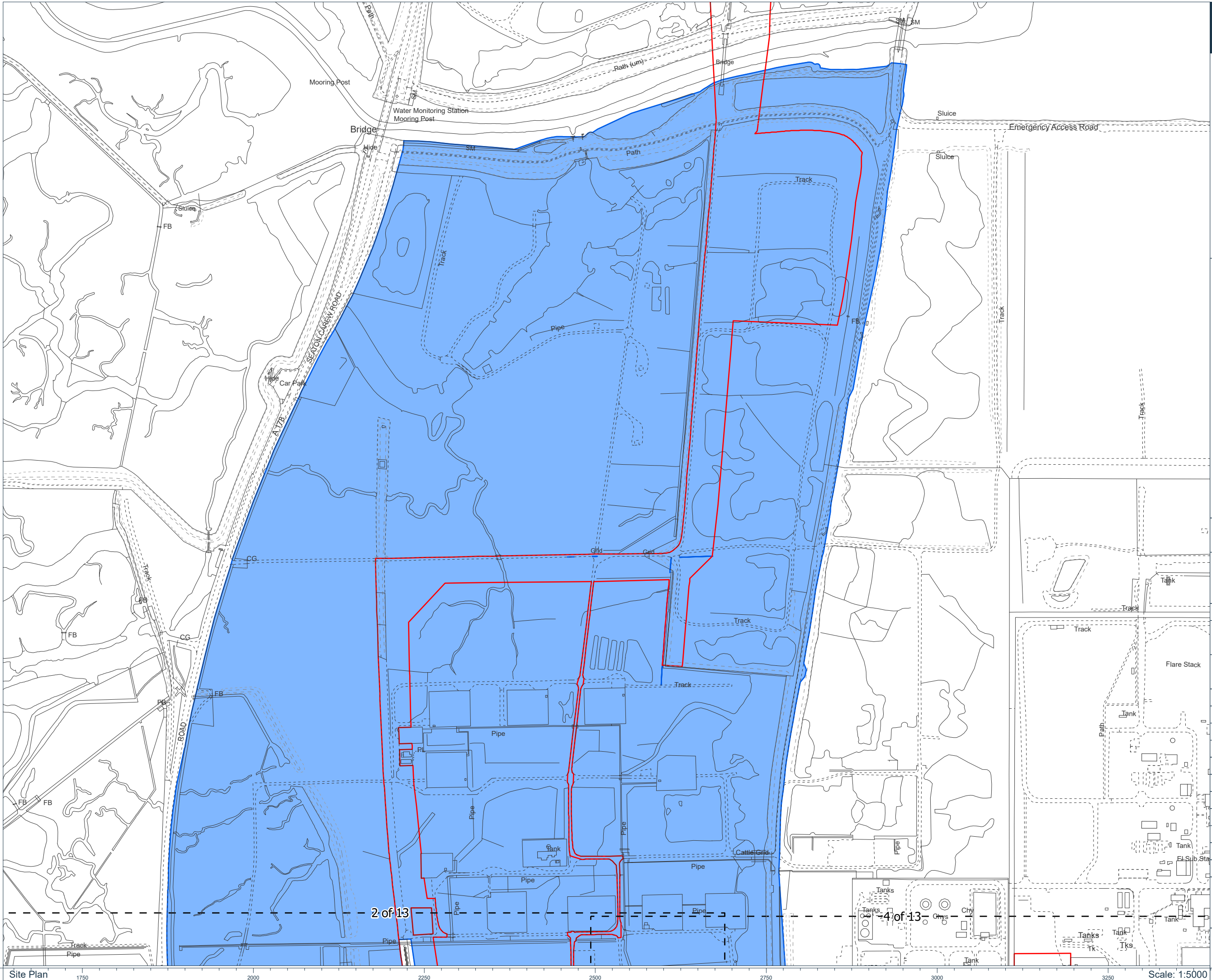
Drawing No: 22004379 PLN INFO 547.3

Rev	Date	Description
-	24.02.2025	First Issue

<b>Drawn:</b>	AL
<b>Approved:</b>	JP
<b>Sheet No:</b>	3 of 13
<b>Sheet Size:</b>	A3



The information contained in this document is confidential and protected by copyright. The use, copying or disclosure to a third party, either wholly or in part, except with the written permission of, and in the manner prescribed by BP Exploration Operating Company Limited (the "Company"), is an infringement of copyright. The Company does not warrant that this document is free of error and does not accept liability for any loss caused or arising from reliance upon information provided herein. Although our best efforts have been made to ensure the accuracy of these plans, all measurements must be confirmed on site. BASED UPON THE ORDINANCE SURVEY MAP WITH THE SANCTION OF THE CONTROLLER OF THE STATIONARY SURVEY, CROWN COPYRIGHT RESERVED. © OS LICENCE No. AC0000080122



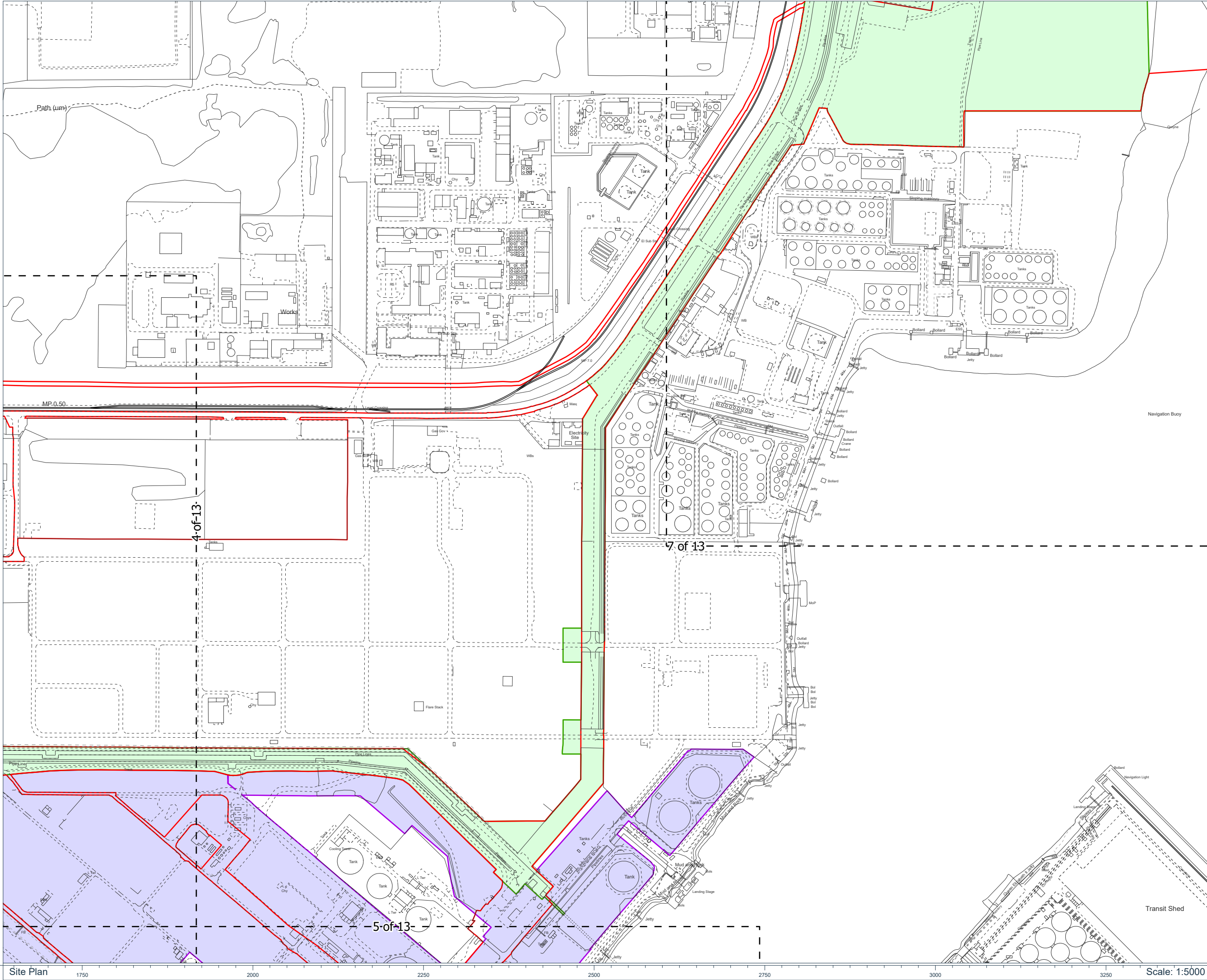








Drawing Location: C:\Users\andrew.lambe\Documents\H2 Teesside\22004379 - Geomatics\01 DM Plans\22004379\_PLN\_INFO\_547.aprx



- Key:
- Page Extent
  - Order Limits
  - North Tees Facilities
  - Pipeline Corridor

Notes:

Coordinate System: British National Grid  
Projection: Transverse Mercator  
Datum: OSGB 1936

Interest:  
SABIC UK Petrochemicals Limited

Location:  
Land surrounding the River Tees, Redcar  
and Cleveland, Tees Valley, TS6 6AF

Coords: 453607, 524000

Scheme Name:  
H2 Teesside

Drawing Name:  
Information Plan

Drawing No: 22004379\_PLN\_INFO\_547.6

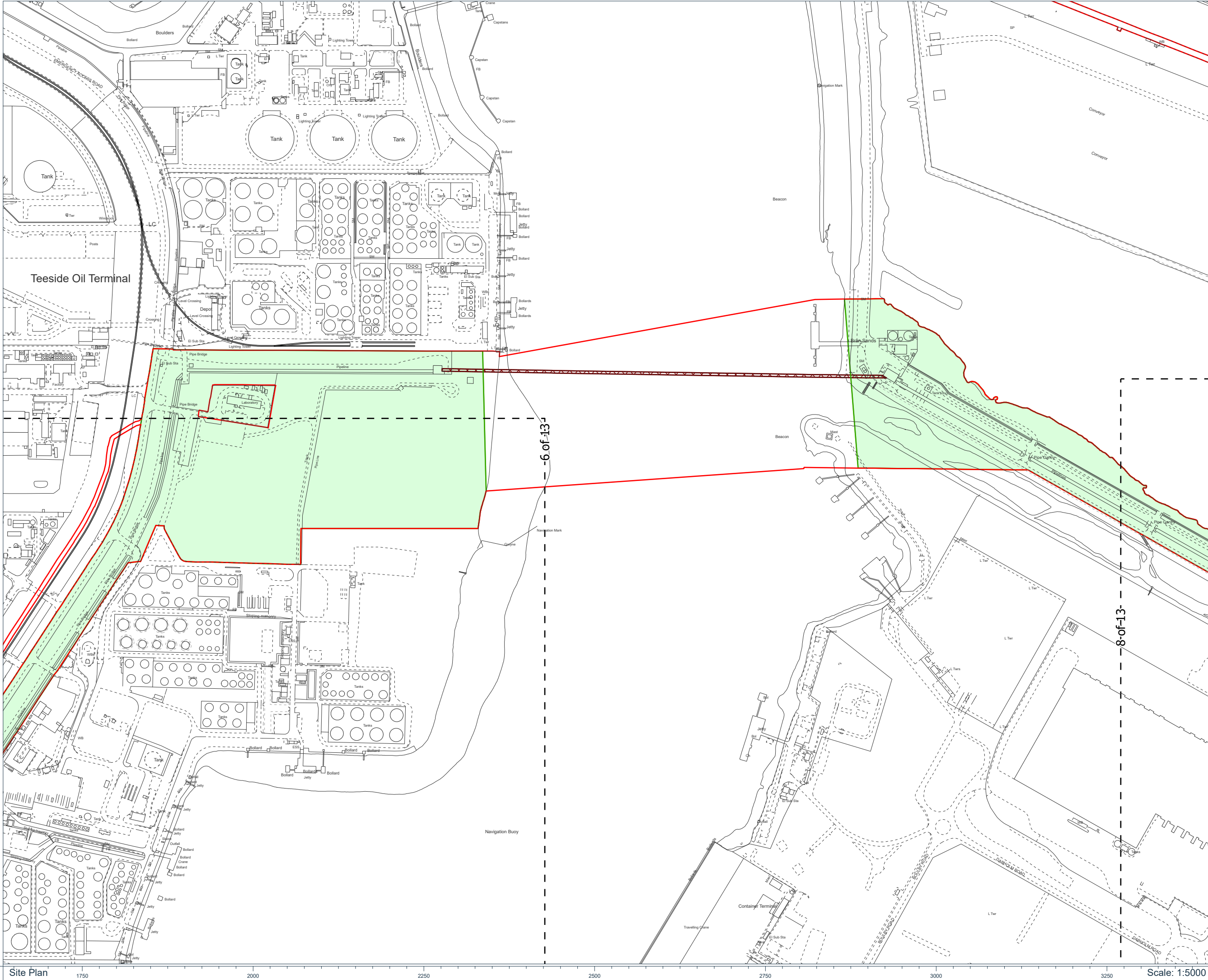
Rev	Date	Description
-	24.02.2025	First Issue

Drawn:	AL
Approved:	JP
Sheet No:	6 of 13
Sheet Size:	A3



The information contained in this document is confidential and protected by copyright. The use, copying or disclosure to a third party, either wholly or in part, except with the written permission of, and in the manner prescribed by BP Exploration Operating Company Limited constitutes an infringement of copyright. Dalcour Maclaren does not warrant that this document is definitive nor free of error and does not accept liability for any loss caused or arising from reliance upon information provided herein. Although our best efforts have been made to ensure the accuracy of these plans, all measurements must be confirmed on site. BASED UPON THE GEOMATICS SURVEY MAP WITH THE SANCTION OF THE CONTROLLER OF THE STATIONARY OFFICE. CROWN COPYRIGHT RESERVED. © OS LICENCE No. AC0000808122 3500

Drawing Location: C:\Users\andrew.lambe\Documents\H2 Teesside - 22004379 - Geomatics\01 DM Plans\20250220\_22004379\_PLN\_INFO\_547.1\20250220\_22004379\_PLN\_INFO\_547.aprx



- Key:
- Page Extent
  - Order Limits
  - Protected Crossing
  - Pipeline Corridor

Notes:

Coordinate System: British National Grid  
Projection: Transverse Mercator  
Datum: OSGB 1936

Interest:  
SABIC UK Petrochemicals Limited

Location:  
Land surrounding the River Tees, Redcar  
and Cleveland, Tees Valley, TS6 6AF

Coords: 454579, 524611

Scheme Name:  
H2 Teesside

Drawing Name:  
Information Plan

Drawing No: 22004379\_PLN\_INFO\_547.7

Rev	Date	Description
-	24.02.2025	First Issue

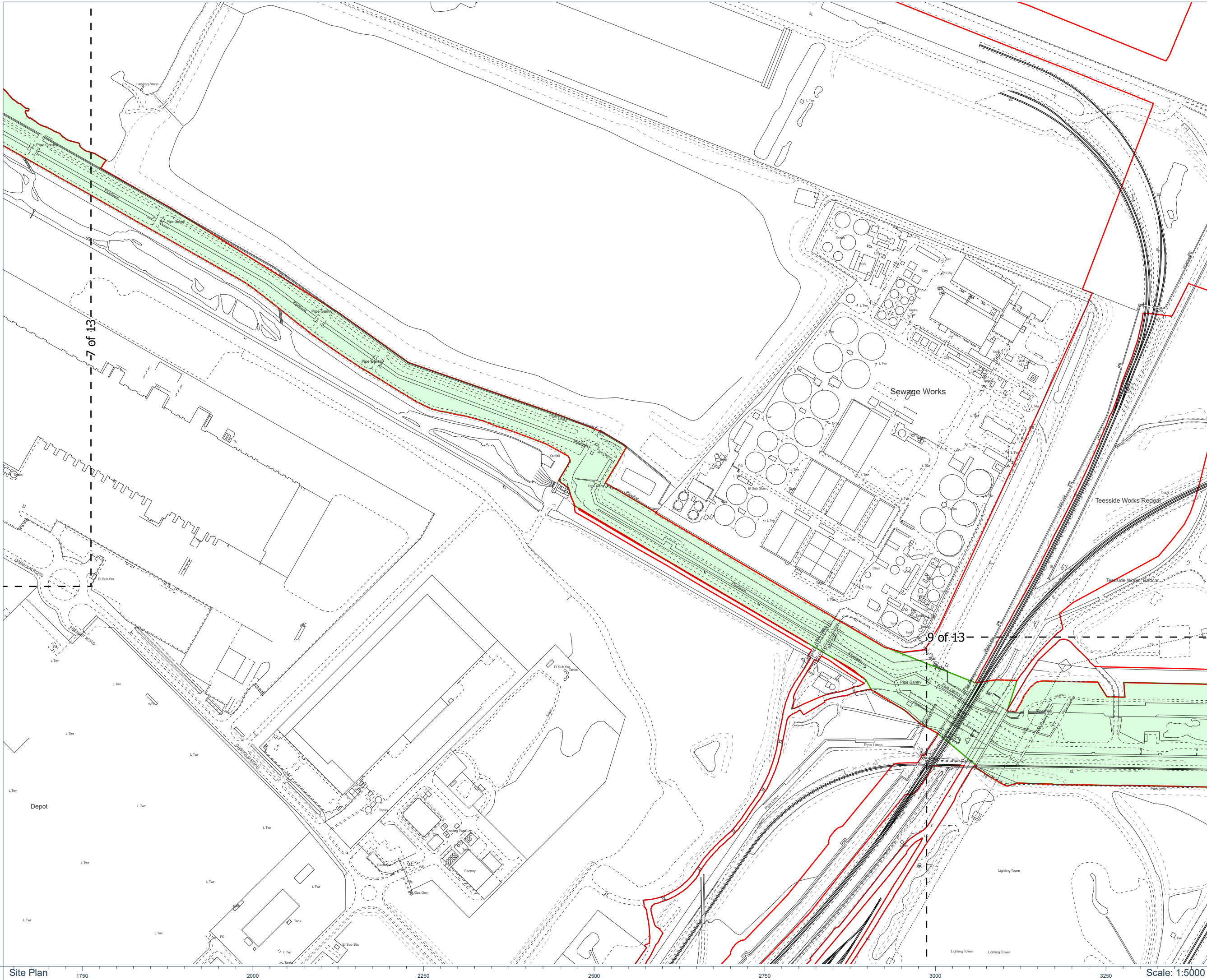
Drawn:	AL
Approved:	JP
Sheet No:	7 of 13
Sheet Size:	A3



The information contained in this document is confidential and protected by copyright. The use, copying or disclosure to a third party, either wholly or in part, except with the written permission of, and in the manner prescribed by BP Exploration Operating Company Limited constitutes an infringement of copyright. Dalcour Maclaren does not warrant that this document is definitive nor free of error and does not accept liability for any loss caused or arising from reliance upon information provided herein. Although our best efforts have been made to ensure the accuracy of these plans, all measurements must be confirmed on site. BASED UPON THE GEOMATIC SURVEY MAP WITH THE SANCTION OF THE CONTROLLER OF THE STATIONARY OFFICE. CROWN COPYRIGHT RESERVED. © OS LICENCE No. AC0000808122 3500



Drawing Location: C:\Users\andrew.lambe\Documents\22004379 - Geomatics\01 DM Plans\20250220\_22004379\_PLN\_INFO\_547.aprx



- Key:
- Page Extent
  - Order Limits
  - Pipeline Corridor

Notes:

Coordinate System: British National Grid  
Projection: Transverse Mercator  
Datum: OSGB 1936

Interest:  
SABIC UK Petrochemicals Limited

Location:  
Land surrounding the River Tees, Redcar  
and Cleveland, Tees Valley, TS6 6AF

Coords: 456215, 524058

Scheme Name:  
H2 Teesside

Drawing Name:  
Information Plan

Drawing No: 22004379\_PLN\_INFO\_547.8

Rev	Date	Description
-	24.02.2025	First Issue

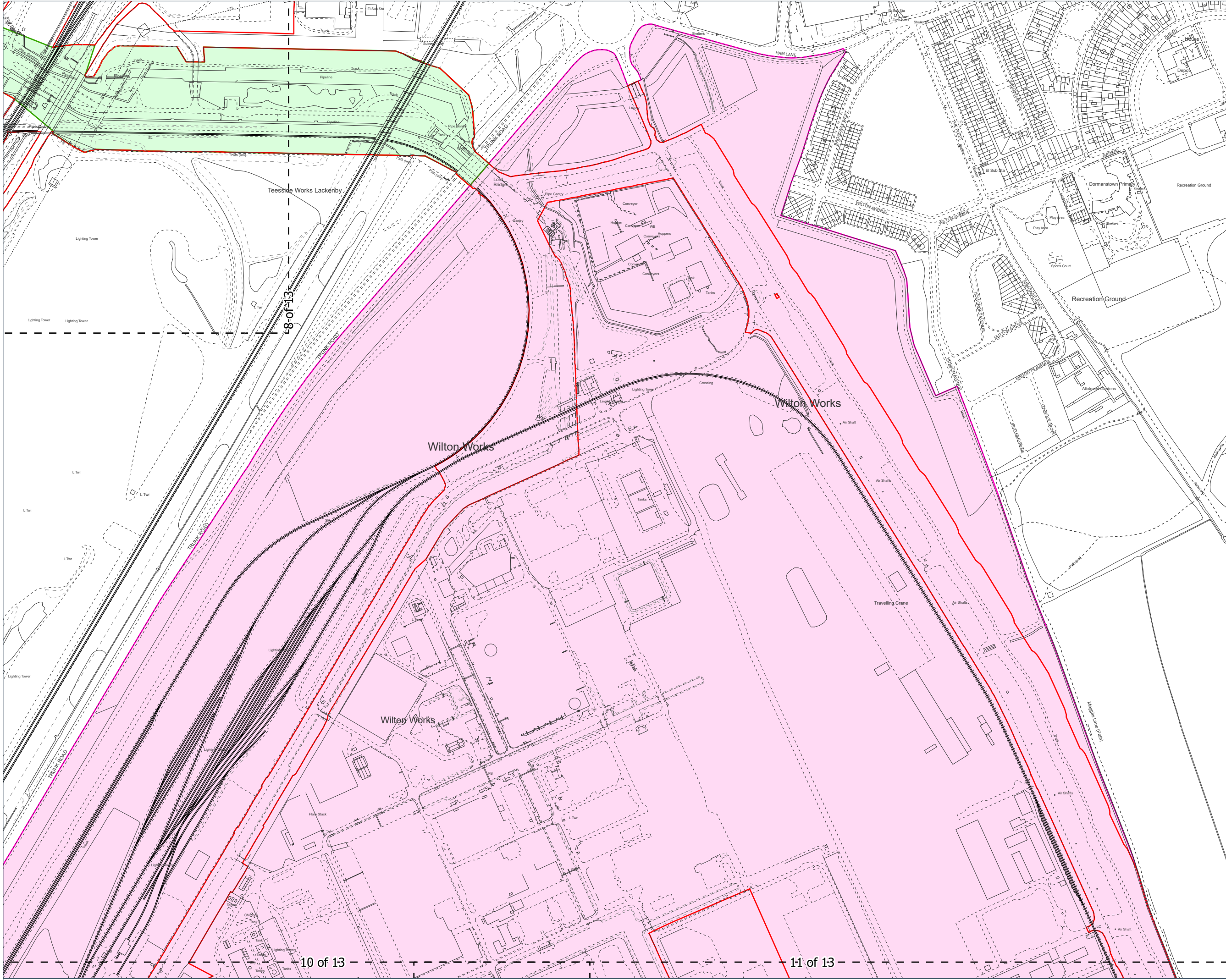
Drawn:	AL	
Approved:	JP	
Sheet No:	8 of 13	
Sheet Size:	A3	



The information contained in this document is confidential and protected by copyright. The use, copying or disclosure to a third party, either wholly or in part, except with the written permission of, and in the manner prescribed by BP Exploration Operating Company Limited constitutes an infringement of copyright. Dalcour Maclaren does not warrant that this document is definitive nor free of error and does not accept liability for any loss caused or arising from reliance upon information provided herein. Although our best efforts have been made to ensure the accuracy of these plans, all measurements must be confirmed on site. BASED UPON THE GEORANGE SURVEY MAP WITH THE SANCTION OF THE CONTROLLER OF THE STATIONARY OFFICE. CROWN COPYRIGHT RESERVED. © OS LICENCE No. AC0000808122 3500



Drawing Location: C:\Users\andrew.lambe\Documents\22004379 - Geomatics\01 DM Plans\20250220\_22004379\_PLN\_INFO\_547.aprx



- Key:
- Page Extent
  - Order Limits
  - Pipeline Corridor
  - Wilton Complex

Notes:

Coordinate System: British National Grid  
Projection: Transverse Mercator  
Datum: OSGB 1936

Interest:  
SABIC UK Petrochemicals Limited

Location:  
Land surrounding the River Tees, Redcar  
and Cleveland, Tees Valley, TS6 6AF

Coords: 457568, 523127

Scheme Name:  
H2 Teesside

Drawing Name:  
Information Plan

Drawing No: 22004379\_PLN\_INFO\_547.9

Rev	Date	Description
-	24.02.2025	First Issue

Drawn: AL  
Approved: JP  
Sheet No: 9 of 13  
Sheet Size: A3



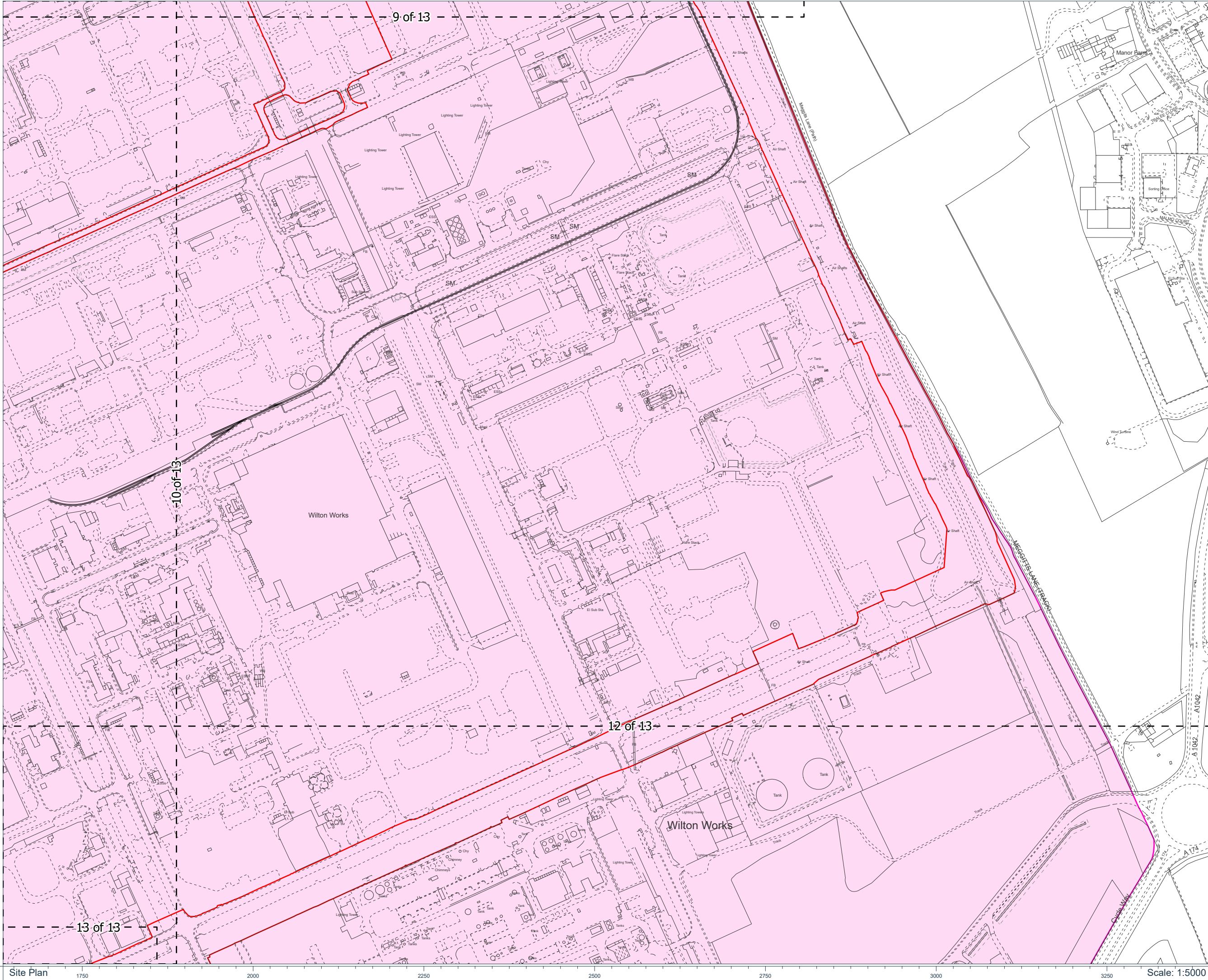
The information contained in this document is confidential and protected by copyright. The use, copying or disclosure to a third party, either wholly or in part, except with the written permission of, and in the manner prescribed by BP Exploration Operating Company Limited constitutes an infringement of copyright. Dalcour Maclaren does not warrant that this document is definitive nor free of error and does not accept liability for any loss caused or arising from reliance upon information provided herein. Although our best efforts have been made to ensure the accuracy of these plans, all measurements must be confirmed on site. BASED UPON THE GROUNDS SURVEY MAP WITH THE SANCTION OF THE CONTROLLER OF THE STATIONERY OFFICE. CROWN COPYRIGHT RESERVED. © OS LICENCE No. AC0000808122 3500







Drawing Location: C:\Users\andrew.lambe\Documents\22004379 - Geomatics\01 DM Plans\20250220\_22004379\_PLN\_INFO\_547.aprx



- Key:
- Page Extent
  - Order Limits
  - Wilton Complex

Notes:

Coordinate System: British National Grid  
Projection: Transverse Mercator  
Datum: OSGB 1936

Interest:  
SABIC UK Petrochemicals Limited

Location:  
Land surrounding the River Tees, Redcar  
and Cleveland, Tees Valley, TS6 6AF

Coords: 458161, 521740

Scheme Name:  
H2 Teesside

Drawing Name:  
Information Plan

Drawing No: 22004379\_PLN\_INFO\_547.11

Rev	Date	Description
-	24.02.2025	First Issue

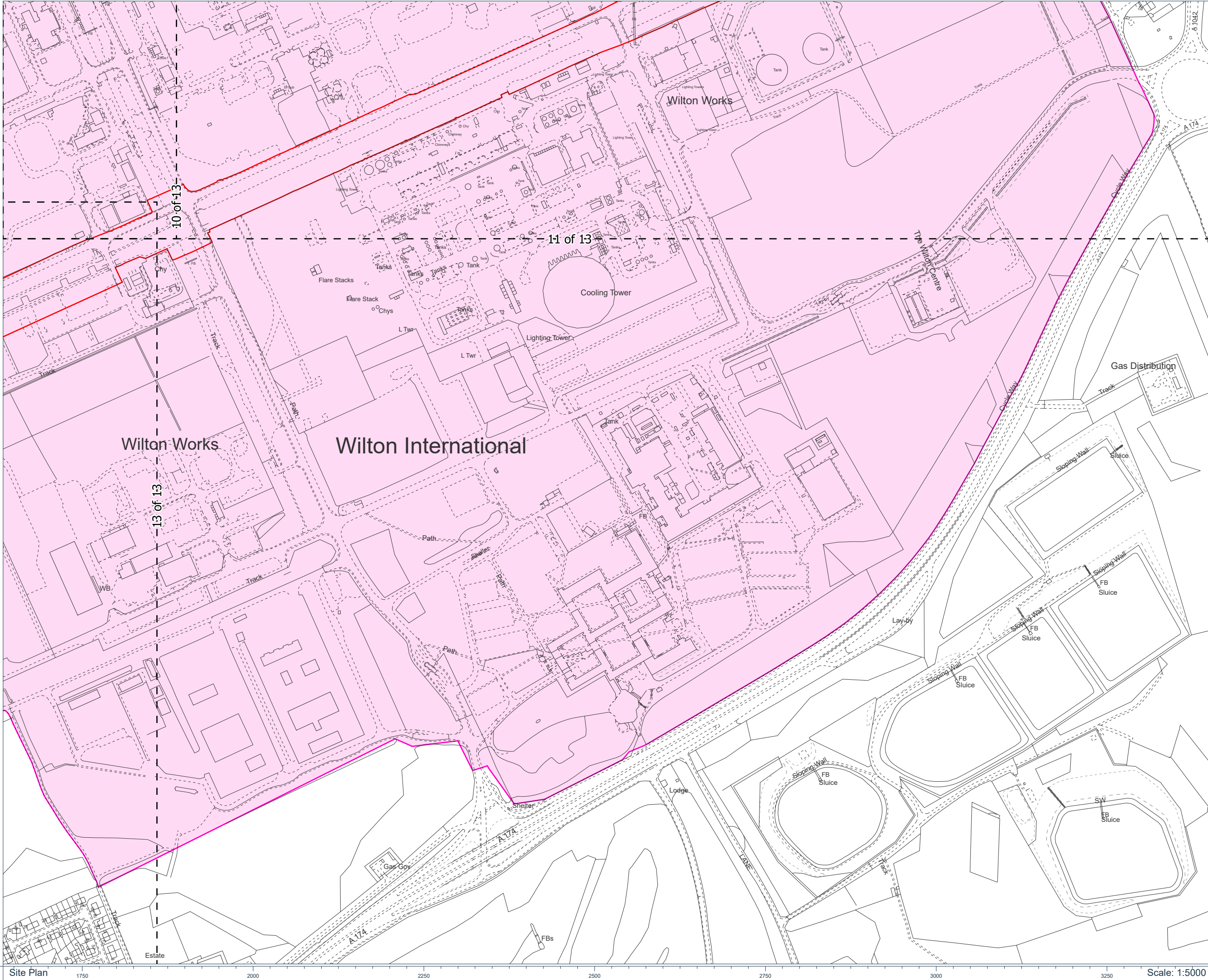
Drawn: AL  
Approved: JP  
Sheet No: 11 of 13  
Sheet Size: A3



The information contained in this document is confidential and protected by copyright. The use, copying or disclosure to a third party, either wholly or in part, except with the written permission of, and in the manner prescribed by BP Exploration Operating Company Limited constitutes an infringement of copyright. Dalcour Maclaren does not warrant that this document is definitive nor free of error and does not accept liability for any loss caused or arising from reliance upon information provided herein. Although our best efforts have been made to ensure the accuracy of these plans, all measurements must be confirmed on site. BASED UPON THE GEOMETRIC SURVEY MAP WITH THE SANCTION OF THE CONTROLLER OF THE STATIONARY OFFICE. CROWN COPYRIGHT RESERVED. © OS LICENCE No. AC0000808122 3500



Drawing Location: C:\Users\andrew.lambe\Documents\H2 Teesside\22004379\_PLN\_INFO\_547\120250220\_22004379\_PLN\_INFO\_547.aprx



- Key:
- Page Extent
  - Order Limits
  - Wilton Complex

Notes:

Coordinate System: British National Grid  
Projection: Transverse Mercator  
Datum: OSGB 1936

Interest:  
SABIC UK Petrochemicals Limited

Location:  
Land surrounding the River Tees, Redcar  
and Cleveland, Tees Valley, TS6 6AF

Coords: 458161, 520679

Scheme Name:  
H2 Teesside

Drawing Name:  
Information Plan

Drawing No: 22004379\_PLN\_INFO\_547.12

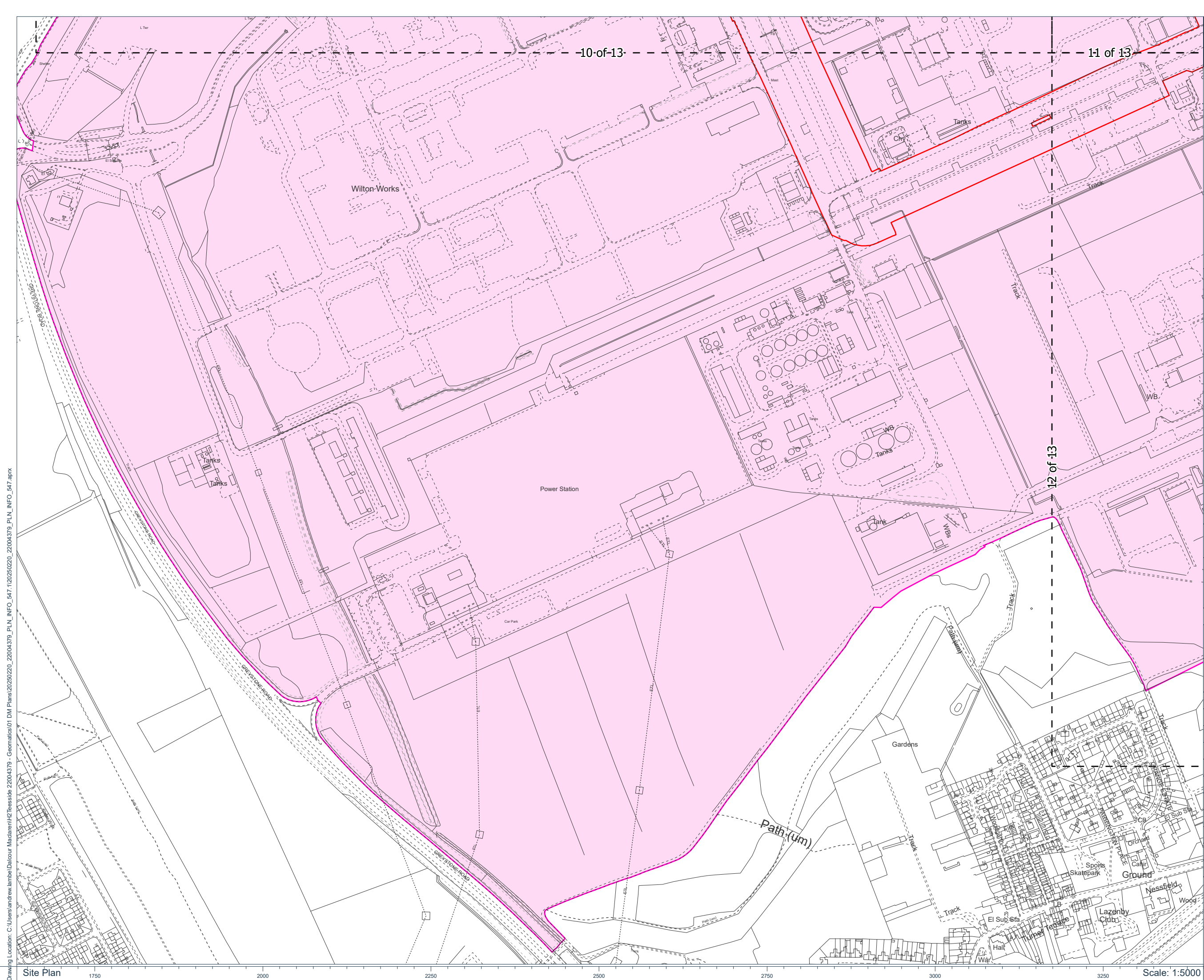
Rev	Date	Description
-	24.02.2025	First Issue

Drawn:	AL
Approved:	JP
Sheet No:	12 of 13
Sheet Size:	A3



The information contained in this document is confidential and protected by copyright. The use, copying or disclosure to a third party, either wholly or in part, except with the written permission of, and in the manner prescribed by BP Exploration Operating Company Limited constitutes an infringement of copyright. Dalcour MacLaren does not warrant that this document is definitive nor free of error and does not accept liability for any loss caused or arising from reliance upon information provided herein. Although our best efforts have been made to ensure the accuracy of these plans, all measurements must be confirmed on site. BASED UPON THE GEOTECHNICAL SURVEY MAP WITH THE SANCTION OF THE CONTROLLER OF THE STATIONERY OFFICE. CROWN COPYRIGHT RESERVED. © OS LICENCE No. AC0000808122 3500





**Key:**



**Notes:**

Coordinate System: British National Grid  
Projection: Transverse Mercator  
Datum: OSGB 1936

**Interest:**  
SABIC UK Petrochemicals Limited

**Location:**  
Land surrounding the River Tees, Redcar  
and Cleveland, Tees Valley, TS6 6AF

Coords: 456621, 520384

Scheme Name:  
H2 Teesside

**Drawing Name:**  
Information Plan

Drawing No: 22004379\_PLN\_INFO\_547.13

Rev	Date	Description
-	24.02.2025	First Issue

<b>Drawn:</b>	AL
<b>Approved:</b>	JP
<b>Sheet No:</b>	13 of 13
<b>Sheet Size:</b>	A3



The information contained in this document is confidential and protected by copyright. The use, copying or disclosure to a third party, either wholly or in part, except with the written permission of, and in the manner prescribed by BP Exploration Operating Company Limited constitutes an infringement of copyright. Dalcor MacLaren does not warrant that this document is definitive nor free of error and does not accept liability for any loss caused or arising from reliance upon information provided herein. Although our best efforts have been made to ensure the accuracy of these plans, all measurements must be confirmed on site. BASED UPON THE ORDNANCE SURVEY MAP WITH THE SANCTION OF THE CONTROLLER OF HM STATIONERY OFFICE. CROWN COPYRIGHT RESERVED. © OS LICENCE No. AC0000808122